

ASK, WSK and ASR Current Transformers

Current transformers are used to convert a high alternating current into a galvanically isolated alternating current of 5 A or 1 A.

All of our current transformers are produced according to DIN VDE 0414/1, DIN 42600 and DIN EN 60044/1 issue 11/2001 as well as the regulation VBG 4.

The product range includes plug-on current transformers, wound primary current transformers, summation current transformers and split core current transformers with a handy click-on lock.

The transformers are produced in class 1 or class 0.5 as a standard. Special versions are available in class 0.2 on demand.

Generally, the delivery of our transducers contains:

- primary conductor mounting
- insulation protective cap
- foot mounting
- secondary terminal cover

Table for secondary 5 A and 1 A, class 1, mostly also available in class 0.5 and certified.

type	ASK 231.5	ASK 31.3	ASK 31.4	ASK 31.5	ASK 41.4	ASK 51.4	ASK 61.4	ASK 63.6	ASK 81.4	ASK 101.4	ASK 103.3
primary current											
1											
2.5											
5											
10											
15											
20											
25											
30											
40											
50			X	X							
60		X	X	X							
75		X	X	X	X						
80	X	X	X	X	X						
100	X	X	X	X	X	X					
125	X										
150	X	X	X	X	X	X					
200	X	X	X	X	X	X	X	X			
250	X	X	X	X	X	X	X	X			
300	X	X	X	X	X	X	X	X			
400	X	X	X	X	X	X	X	X	X		
500	X	X	X	X	X	X	X	X	X	X	
600		X	X	X	X	X	X	X	X	X	
750		X	X	X	X	X	X	X	X	X	X
800					X	X	X	X	X	X	X
1000					X	X	X	X	X	X	X
1200						X	X	X	X	X	X
1250						X	X	X	X	X	X
1500							X	X	X	X	X
1600							X	X	X	X	X
1800										X	X
2000									X	X	X
2500											X
3000											X
bus bar mm	30x10	30x10 2x20x10	30x10 2x20x10	30x10 2x20x10	40x10 2x30x5	50x12 2x40x10	60x10 2x50x10	60x30	80x10 2x60x10	100x10 2x80x10	2x100x10 3x80x10
conductor Ø mm	28	26	28	28	32	44	44	30	55	70	85
width mm	49.5	60	60	60	70	85	95	88	120	130	172

Optionally the current transformers can be equipped with a snap-on fixing for mounting on a DIN-rail.

ASK, WSK and ASR Current Transformer

Table for secondary 5 A and 1 A, class 1,
mostly also available in class 0.5 and certified .

ACCESSORIES

type	ASK	ASK	ASK	ASR	ASR	WSK	WSK	WSK	KBU	KBU	KBU	KBU
primary current	105.6	127.6	130.5	22.3	201.3	30	40	60	23	58	812	816
1						X	X					
2.5						X	X					
5						X	X	X				
10						X	X	X				
15						X	X	X				
20						X	X	X				
25							X	X				
30							X	X				
40												
50												
60				X	X							
75				X	X							
80				X	X							
100				X	X				X			
125												
150				X	X				X			
200				X	X				X			
250				X	X				X	X	X	
300			X	X	X				X	X	X	
400			X	X					X	X	X	
500			X	X						X	X	
600	X		X	X						X	X	
750	X		X							X	X	
800	X		X							X	X	
1000	X	X	X							X	X	X
1200	X	X	X								X	X
1250	X	X	X								X	
1500	X	X	X								X	X
1600			X									X
1800	X	X										
2000	X	X	X									X
2500	X	X	X									X
3000	X	X	X									X
4000		X										
5000		X						70				
6000		X				60						
bus bar mm	100x55	120x72	130x30						30x20	50x80	80x120	80x160
conductor Ø mm	55	72		22.5	21		70					
width mm	128	205	180	60	44				58	58	58	79

Tube Current Transformer Type ASR 201.3

Circular conductor 21.0 mm Ø

primary nominal current A	nominal power for sec. 5 A	
	class 0.5 VA	class 1 VA
60		1
75; 80		1.5
100	1.5	2.5
125	1.5	2.5
150	1.5	3.75
200	2.5	2.5
		3.75
250	2.5	2.5
	5	5
300	2.5	2.5
	5	5

This current transformer corresponds to VDE 0414/1-3 DIN 42600 and IEC 185.

Unbreakable plastic housing, Macrolon black, self-extinguishing, low flammable, transformer housing ultrasonically welded.

Nominal frequency 50 Hz (also applicable at 60 Hz); insulation class E; overload factor M 5.

$I_{th} = 60 I_{1N}$ (I_{1N} for 1 s duration);

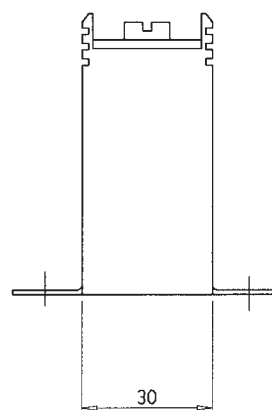
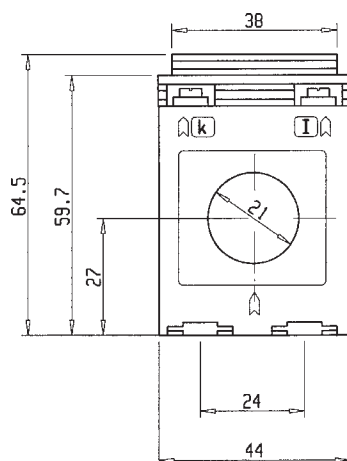
V_{max} 720 V

0.5 series



Secondary nominal current 5 A

Optional secondary nominal current 1 A



ACCESSORIES

Snap-on mounting for 35 mm DIN rail available

More transformer types on request

Tube Current Transformer Type ASR 22.3

Circular conductor 22.5 mm Ø



This current transformer corresponds to VDE 0414/1-3, DIN 42600 and IEC 185.

Unbreakable plastic housing, Macrolon black, self-extinguishing, low flammable. Transformer housing ultrasonically welded.

Nominal frequency 50 Hz (also applicable at 60 Hz);
Insulation class E;
Overload factor M5

$I_{th} = 60 I_{1N}$ (I_{1N} for 1 s duration);

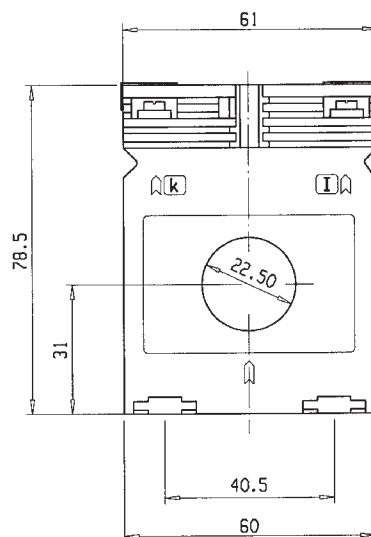
V_{max} 720 V 0.5 series

Secondary nominal current 5 A

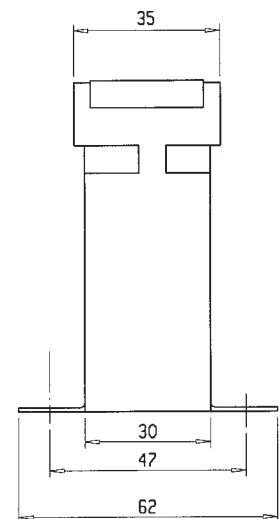
Optional secondary nominal current 1 A

primary nominal current A	nominal power for sec. 5 A	
	class 0.5 VA	class 1 VA
60		1.5
75; 80		1.5
100	2.5	2.5
150	2.5	2.5
		5
200	2.5	2.5
	5	5
250	2.5	2.5
	5	5
		10
300	2.5	2.5
	5	5
	10	10
400	2.5	2.5
	5	5
	10	10
500	2.5	2.5
	5	5
	10	10
600	5	5
	10	10

ACCESSORIES



Standard foot mounting
with terminal cover



Snap-on mounting for 35 mm DIN rail available

More transformer types on request

Tube Current Transformer Type ASR 231.5

Primary conductor 30 x 10 mm

Circular conductor 28.0 mm Ø



primary nominal current A	nominal power for sec. 5 A	
	class 0.5 VA	class 1 VA
80		1.25
100		1.5
125		2.5
150		2.5
200	2.5	2.5
250	2.5	2.5
300	2.5	2.5
400	2.5	5
400	5	5
500	2.5	2.5
500	5	5

This current transformer
corresponds to
VDE 0414/1-3
DIN 42600 and IEC 185.

Unbreakable plastic housing,
Macrolon black,
self-extinguishing, low flammable,
transformer housing ultrasonically welded.

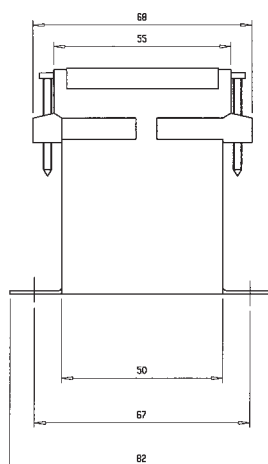
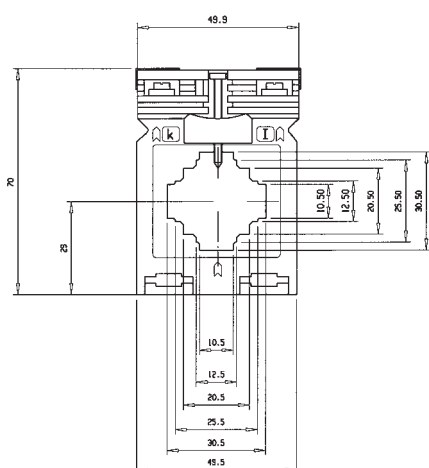
Nominal frequency 50 Hz (also applicable at 60 Hz);
insulation class E;
overload factor M 5.

$I_{th} = 60 I_{1N}$ (I_{1N} for 1 s duration);

V_{max} 720 V 0.5 series

Secondary nominal current 5 A

Optional secondary nominal current 1 A



ACCESSORIES

Standard foot mounting with terminal cover

More transformer types on request

Plug-on Current Transformer Type ASK 31.3



Primary conductor 30 x 10 mm

Circular conductor 28.0 mm Ø

This current transformer corresponds to VDE 0414/1-3, DIN 42600 and IEC 185.

Unbreakable plastic housing, Macrolon black, self-extinguishing, low flammable. Transformer housing ultrasonically welded.

Nominal frequency 50 Hz (also applicable at 60 Hz);
Insulation class E;
Overload factor M 5

$I_{th} = 60 I_{1N}$ (I_{1N} for 1 s duration);

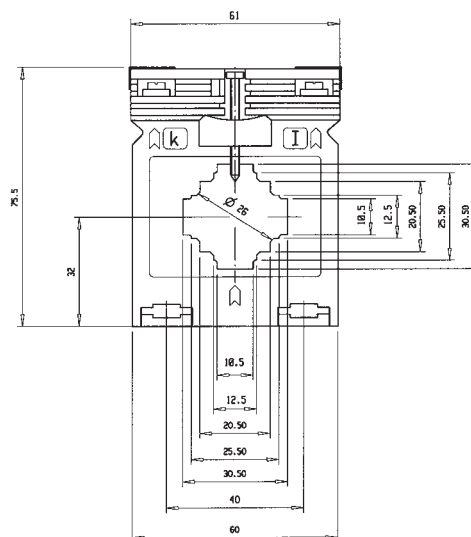
V_{max} 720 V 0.5 series

Secondary nominal current 5 A

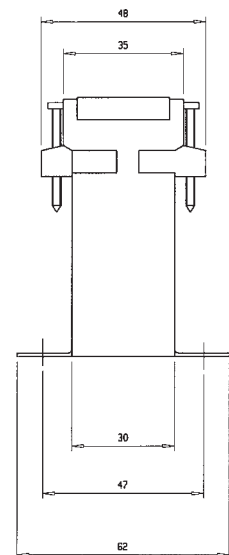
Optional secondary nominal current 1 A

primary nominal current A	nominal power for sec. 5 A	
	class 0.5 VA	class 1 VA
60		1
75; 80		1.5
100	2.5	2.5
150	2.5	2.5
200	2.5	2.5
		5
250	2.5	2.5
	5	5
300	2.5	2.5
	5	5
		10
400	2.5	2.5
	5	5
		10
500	2.5	2.5
	5	5
	10	10
600	5	5
	10	10

ACCESSORIES



Standard foot mounting
with terminal cover



Snap-on mounting for 35 mm DIN rail available

More transformer types on request

Plug-on Current Transformer Type ASK 31.4

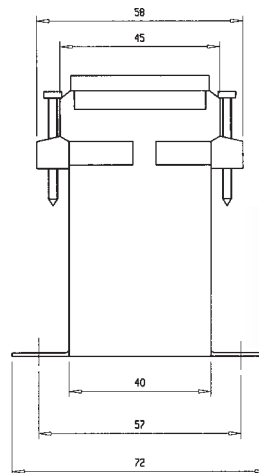
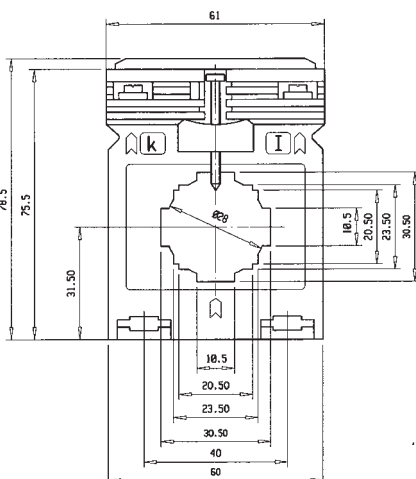
Primary conductor 30 x 10 mm
Circular conductor 28.0 mm Ø



This current transformer
corresponds to
VDE 0414/1-3,
DIN 42600 and IEC 185.

primary nominal current A	nominal power for sec. 5 A	
	class 0.5 VA	class 1 VA
50; 60		1.25
75; 80		1.5
100		2.5
	2.5	3.75
150	2.5	2.5
		5
200	2.5	2.5
	5	5
250	2.5	2.5
	5	5
		10
300	2.5	2.5
	5	5
	10	10
400	2.5	2.5
	5	5
	10	10
500	2.5	2.5
	5	5
	10	10
600	5	5
	10	10
	15	15
750	5	5
	10	10
	15	15

Secondary nominal current 5 A
Optional secondary nominal current 1 A



Standard foot mounting
with terminal cover

Snap-on mounting for 35 mm DIN rail available

More transformer types on request

ACCESSORIES

Plug-on Current Transformer Type ASK 31.5



Primary conductor 30 x 10 mm

Circular conductor 28.0 mm Ø

This current transformer corresponds to
VDE 0414/1-3, DIN 42600 and IEC 185.

Unbreakable plastic housing, Macrolon black,
self-extinguishing, low flammable.
Transformer housing ultrasonically welded.

Nominal frequency 50 Hz (also applicable at 60 Hz);
Insulation class E;
Overload factor M 5

$I_{th} = 60 I_{1N}$ (I_{1N} for 1 s duration);

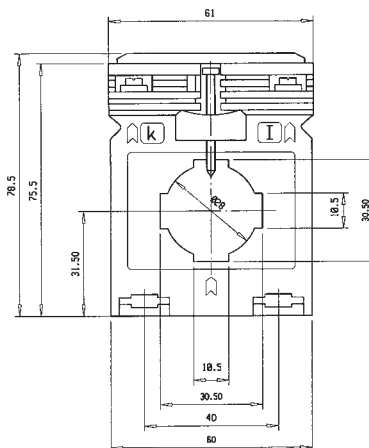
V_{max} 720 V 0.5 series

Secondary nominal current 5 A

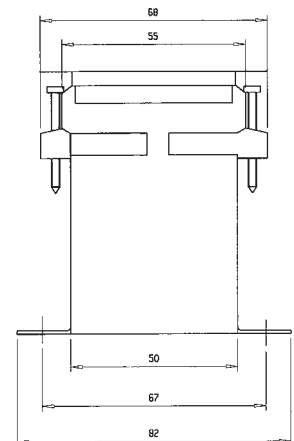
Optional secondary nominal current 1 A

primary nominal current A	nominal power for sec. 5 A	
	class 0.5 VA	class 1 VA
50		1.5
60		2.5
75; 80	2.5	2.5
100	2.5	2.5
150	2.5	2.5
	5	5
200	2.5	2.5
	5	5
250	2.5	
	5	5
	10	10
300 400	2.5	
	5	5
	10	10
500	2.5	
	5	5
	10	10
600	2.5	
	5	5
	10	10
	15	15
750	5	5
	10	10
	15	15

ACCESSORIES



Standard foot mounting
with terminal cover



Snap-on mounting for 35 mm DIN rail available

More transformer types on request

Plug-on Current Transformer Type ASK 41.4

Primary conductor 40 x 10 mm

Circular conductor 32.0 mm Ø



primary nominal current A	nominal power for sec. 5 A	
	class 0.5	class 1
	VA	VA
75; 80		1.5
100	1.5	2.5
	2.5	3.75
150	2.5	2.5
		5
200	2.5	2.5
	5	5
250	2.5	2.5
	5	5
		10
300 400	2.5	2.5
	5	5
	10	10
500	2.5	2.5
	5	5
		10
600	2.5	2.5
	5	5
	10	10
		15
750 800	5	5
	10	10
		15
1000	5	5
	10	10

This current transformer
corresponds to
VDE 0414/1-3
DIN 42600 and IEC 185.

Unbreakable plastic housing
with glass-fibre reinforcement,
self-extinguishing, low flammable.
Transformer housing ultrasonically welded

Nominal frequency 50 Hz (also applicable at 60 Hz);
insulation class E;
overload factor M 5

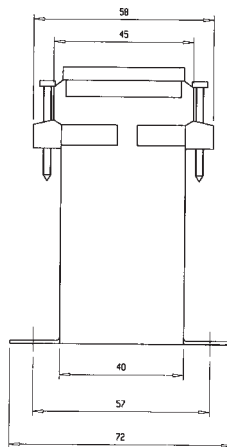
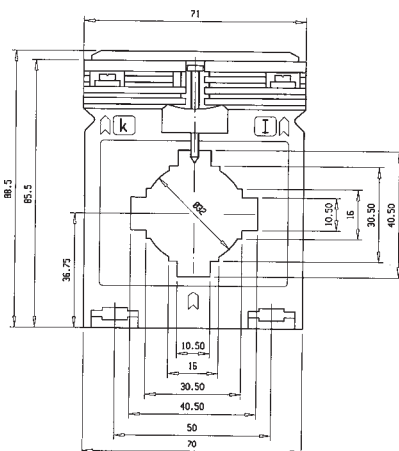
$I_{th} = 60 I_{1N}$ (I_{1N} for 1 s duration);

V_{max} 720 V 0.5 series

Secondary nominal current 5 A

Optional secondary nominal current 1 A

ACCESSORIES



Standard foot mounting
with terminal cover

Snap-on mounting for
35 mm DIN rail available

**More transformer types
on request**

Plug-on Current Transformer Type ASK 51.4



Primary conductor 50 x 12 mm

(2 x 40 x 10 mm)

Circular conductor 44.0 mm Ø

This current transformer corresponds to VDE 0414/1-3, DIN 42600 and IEC 185.

Unbreakable plastic housing, Macrolon black, self-extinguishing, low flammable. Transformer housing ultrasonically welded.

Nominal frequency 50 Hz (also applicable at 60 Hz);
Insulation class E;
Overload factor M 5

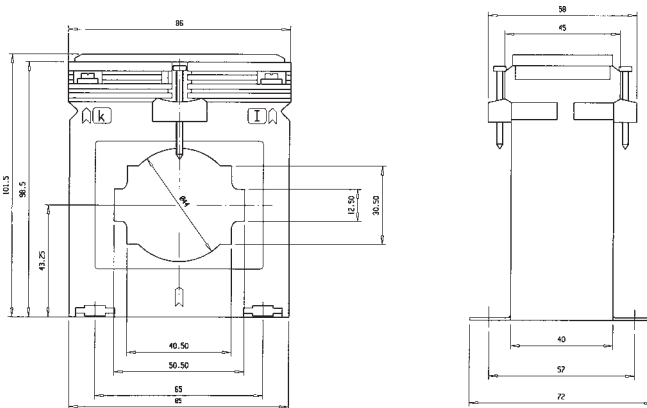
$I_{th} = 60 I_{1N}$ (I_{1N} for 1 s duration);

V_{max} 720 V

0.5 series

Secondary nominal current 5 A

Optional secondary nominal current 1 A



primary nominal current A	nominal power for sec. 5 A	
	class 0.5 VA	class 1 VA
150	1.5	1.5
		2.5
200	1.5	2.5
	2.5	5
250	1.5	2.5
	2.5	5
300	1.5	2.5
	2.5	5
	5	10
400	2.5	2.5
	5	5
	10	10
500	2.5	2.5
	5	5
	10	10
		15
600	2.5	2.5
	5	5
	10	10
		15
750	2.5	2.5
	5	5
	10	10
		15
800	5	5
	10	10
	15	15
1000	5	5
	10	10
	15	15
1200	5	5
	10	10
	15	15

Standard foot mounting
with terminal cover

More transformer types on request

ACCESSORIES

Plug-on Current Transformer Type ASK 61.4

Primary conductor 60 x 10 mm

(2 x 50 x 10 mm)

Circular conductor 44.0 mm Ø



primary nominal current A	nominal power for sec. 5 A	
	class 0.5	class 1
	VA	VA
250	1.5	1.5
	2.5	2.5
300	1.5	1.5
	2.5	2.5
	5	5
400	1.5	1.5
	2.5	2.5
	5	5
		10
500	1.5	2.5
	2.5	5
	5	10
		15
600	2.5	2.5
	5	5
	10	10
		15
750	2.5	2.5
	5	5
	10	10
		15
800	2.5	2.5
	5	5
	10	10
	15	15
1000	5	5
	10	10
	15	15
1200	5	5
	10	10
	15	15
		30
1250	5	5
	10	10
	15	15
		30
1500	5	5
	10	10
	15	15
		30

This current transformer corresponds to VDE 0414/1-3 DIN 42600 and IEC 185.

Unbreakable plastic housing, Macrolon black, self-extinguishing, low flammable, transformer housing ultrasonically welded.

Nominal frequency 50 Hz (also applicable at 60 Hz); insulation class E; overload factor M 5.

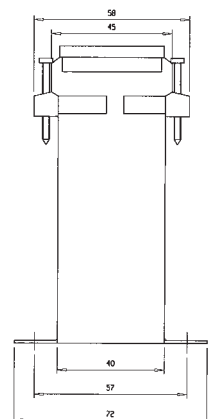
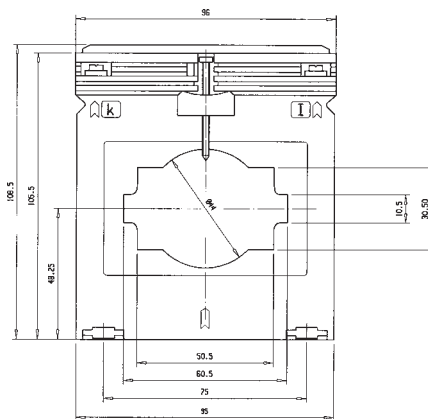
$$I_{th} = 60 I_{1N} (I_{1N} \text{ for } 1 \text{ s duration});$$

V_{max} 720 V

0.5 series

Secondary nominal current 5 A

Optional secondary nominal current 1 A



ACCESSORIES

Standard foot mounting with terminal cover

More transformer types on request

Plug-on Current Transformer Type ASK 63.6



Primary conductor 60 x 30 mm

Circular conductor 30.0 mm Ø

This current transformer corresponds to VDE 0414/1-3, DIN 42600 and IEC 185.

Unbreakable plastic housing, Macrolon black, self-extinguishing, low flammable. Transformer housing ultrasonically welded.

Nominal frequency 50 Hz (also applicable at 60 Hz);
Insulation class E;
Overload factor M 5 (from 2000 A: M 10)

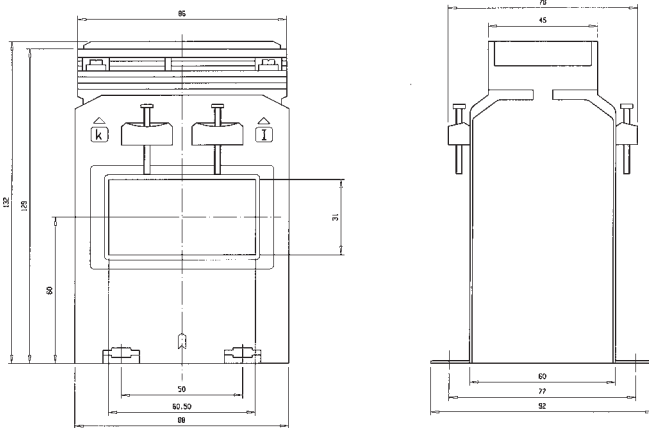
$$I_{th} = 60 I_{1N} (I_{1N} \text{ for } 1 \text{ s duration});$$

V_{max} 720 V

0.5 series

Secondary nominal current 5 A

Optional secondary nominal current 1 A



Standard foot mounting
with terminal cover

More transformer types on request

primary nominal current A	nominal power for sec. 5 A	
	class 0.5 VA	class 1 VA
200		2.5
250	2.5	2.5
300	2.5	2.5
	5	5
400	2.5	2.5
	5	5
500	2.5	2.5
	5	5
		10
		15
600	2.5	2.5
	5	5
	10	10
		15
750	2.5	2.5
	5	5
	10	10
		15
800	2.5	2.5
	5	5
	10	10
	15	15
1000	5	5
	10	10
	15	15
		30
1200	5	5
	10	10
	15	15
		30
1250	5	5
	10	10
	15	15
		30
1500	5	5
	10	10
	15	15
		30
1600	5	5
	10	10
	15	15

ACCESSORIES

Plug-on Current Transformer Type ASK 81.4

Primary conductor 80 x 10 mm

(2 x 60 x 10 mm)

Circular conductor 59.0 mm Ø



primary nominal current A	nominal power for sec. 5 A	
	class 0.5	class 1
	VA	VA
500	2.5	2.5
		5
		10
600	2.5	2.5
	5	5
	10	10
750	2.5	2.5
	5	5
	10	10
		15
800	2.5	2.5
	5	5
	10	10
		15
1000	5	5
	10	10
	15	15
1200	5	5
	10	10
	15	15
1250	5	5
	10	10
	15	15
1500	5	10
	10	15
	15	30
1600	5	10
	10	15
	15	30
2000	10	10
	15	15
		30

This current transformer corresponds to VDE 0414/1-3 DIN 42600 and IEC 185.

Unbreakable plastic housing, Macrolon black, self-extinguishing, low flammable, transformer housing ultrasonically welded.

Nominal frequency 50 Hz (also applicable at 60 Hz);
Insulation class E;
Overload factor M 5 (from 2000 A: M 10)

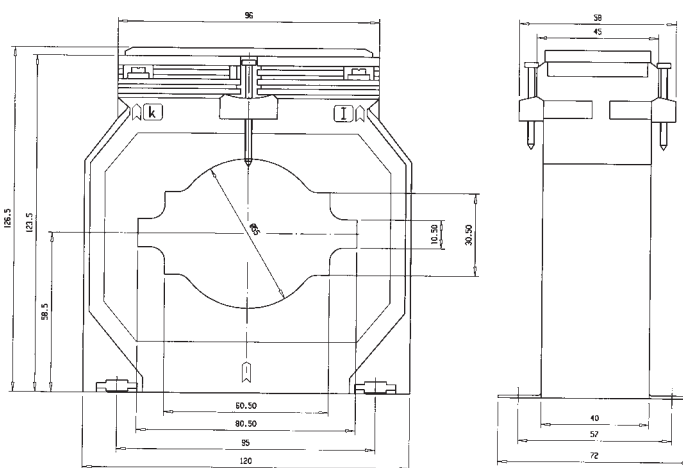
$I_{th} = 60 I_{1N}$ (I_{1N} for 1 s duration);

V_{max} 720 V

0.5 series

Secondary nominal current 5 A

Optional secondary nominal current 1 A



ACCESSORIES

Standard foot mounting
with terminal cover

More transformer types on request

Plug-on Current Transformer Type ASK 101.4



Primary conductor 100 x 10 mm

(2 x 80 x 10 mm)

Circular conductor 70,0 mm Ø

This current transformer corresponds to VDE 0414/1-3, DIN 42600 and IEC 185.

Unbreakable plastic housing, Macrolon black, self-extinguishing, low flammable. Transformer housing ultrasonically welded.

Nominal frequency 50 Hz (also applicable at 60 Hz);
Insulation class E;
Overload factor M 5 (from 2000 A: M 10)

$$I_{th} = 60 I_{1N} \text{ (} I_{1N} \text{ for 1 s duration)};$$

V_{max} 720 V

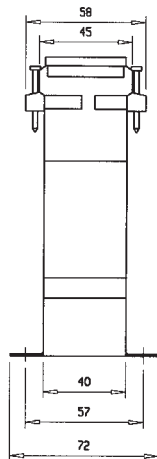
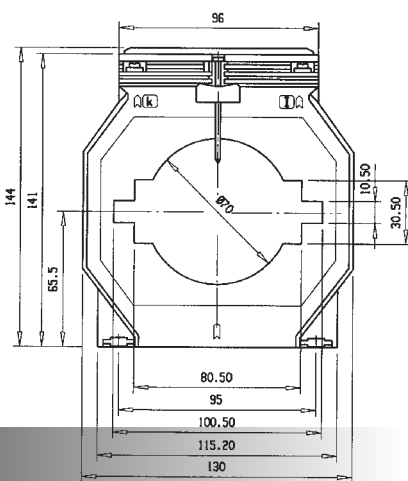
0.5 series

Secondary nominal current 5 A

Optional secondary nominal current 1 A

primary nominal current A	nominal power for sec. 5 A	
	class 0.5 VA	class 1 VA
600	2.5	5
	5	10
750	5	5
	10	10
800	5	5
	10	10
1000		15
	5	5
	10	10
1200 1250		15
	5	5
	10	10
1500		30
	5	5
	10	10
	15	15
1600		30
	5	10
	10	15
	15	30
1800		
	5	10
	10	15
	15	30
2000		45
	5	10
	10	15
	15	30

ACCESSORIES



Standard foot mounting
with terminal cover

More transformer types on request

Plug-on Current Transformer Type ASK 103.3

Primary conductor 2 x 100 x 10 mm

3 x 80 x 10 mm

Circular conductor 85,0 mm Ø



primary nominal current A	nominal power for sec. 5 A	
	class 0.5	class 1
	VA	VA
750	2.5	5
	5	10
800	2.5	5
	5	10
	10	15
1000	5	5
	10	10
	15	15
1200	5	5
	10	10
	15	15
		30
1250	5	5
	10	10
	15	15
		30
1500	10	10
	15	15
		30
1600	10	10
	15	15
		30
2000	10	10
	15	15
	30	30
2500	10	10
	15	15
	30	30
3000	10	10
	15	15
	30	30

This current transformer corresponds to VDE 0414/1-3 DIN 42600 and IEC 185.

Unbreakable plastic housing, Macrolon black, self-extinguishing, low flammable, transformer housing ultrasonically welded.

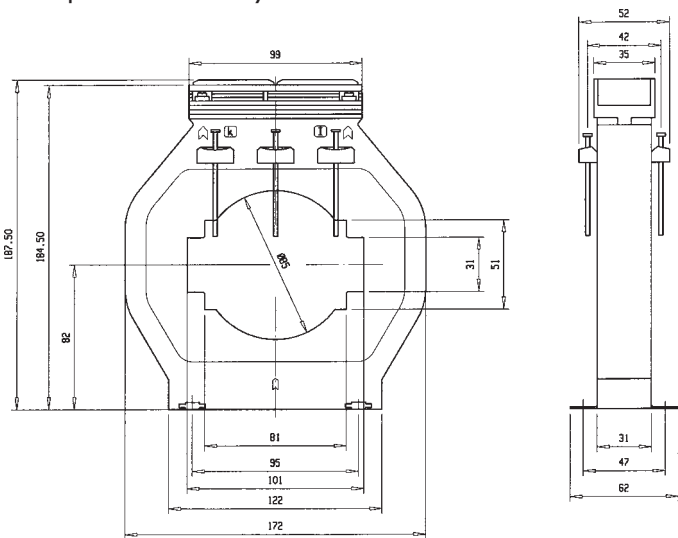
Nominal frequency 50 Hz (also applicable at 60 Hz);
Insulation class E;
Overload factor M 5 (from 2000 A: M 10)

$I_{th} = 60 I_{1N}$ (I_{1N} for 1 s duration);

V_{max} 720 V 0.5 series

Secondary nominal current 5 A

Optional secondary nominal current 1 A



ACCESSORIES

Standard foot mounting
with terminal cover

More transformer types on request

Plug-on Current Transformer Type ASK 105.6



Primary conductor 100 x 55 mm

This current transformer corresponds to VDE 0414/1-3, DIN 42600 and IEC 185.

Unbreakable plastic housing, Macrolon black, self-extinguishing, low flammable. Transformer housing ultrasonically welded.

Nominal frequency 50 Hz (also applicable at 60 Hz);
Insulation class E;
Overload factor M 5 (from 2000 A: M 10)

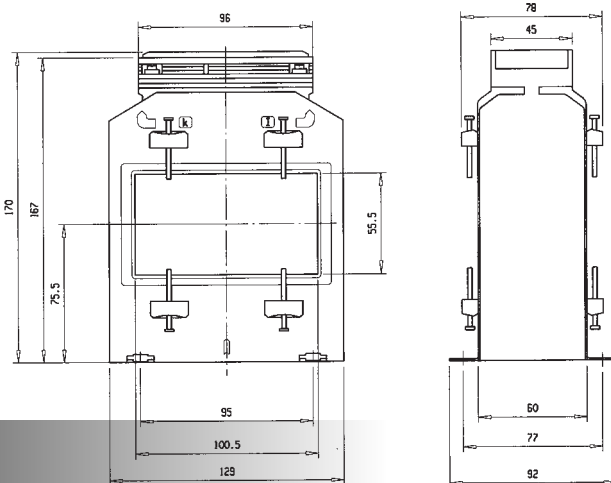
$$I_{th} = 60 I_{1N} \text{ (} I_{1N} \text{ for 1 s duration)};$$

V_{max} 720 V 0.5 series

Secondary nominal current 5 A
Optional secondary nominal current 1 A

primary nominal current A	nominal power for sec. 5 A	
	class 0.5 VA	class 1 VA
600	2.5	5
	5	10
700	5	5
	10	10
800	5	5
	10	10
1000	5	5
	10	10
1200	5	5
	10	10
	15	15
1250	5	5
	10	10
	15	15
1500	5	5
	10	10
	15	15
	30	30
1800	5	5
	10	10
	15	15
		30
2000	5	10
	15	30
	30	45
2500	5	10
	10	15
	30	45
3000	5	10
	10	15
	15	30
	30	45

ACCESSORIES



Standard foot mounting
with terminal cover

More transformer types on request

Plug-on Current Transformer Type ASK 127.6

Primary conductor 120 x 72 mm
(2 x 80 x 10 mm)



primary nominal current A	nominal power for sec. 5 A	
	class 0.5	class 1
	VA	VA
1000	5	5
		10
1200	5	10
	10	15
1250	10	10
	15	15
	30	30
1500	10	10
	15	15
	30	30
1800	10	10
	15	15
	30	30
2000	10	10
	15	15
	30	30
2500	10	10
	15	15
	30	30
3000	10	10
	15	15
	30	30
4000	10	10
	15	15
	30	30
5000	10	10
	15	15
	30	30
		45
6000	10	10
	15	15
	30	30
		45

This current transformer corresponds to VDE 0414/1-3 DIN 42600 and IEC 185.

Unbreakable plastic housing, Macrolon black, self-extinguishing, low flammable, transformer housing ultrasonically welded.

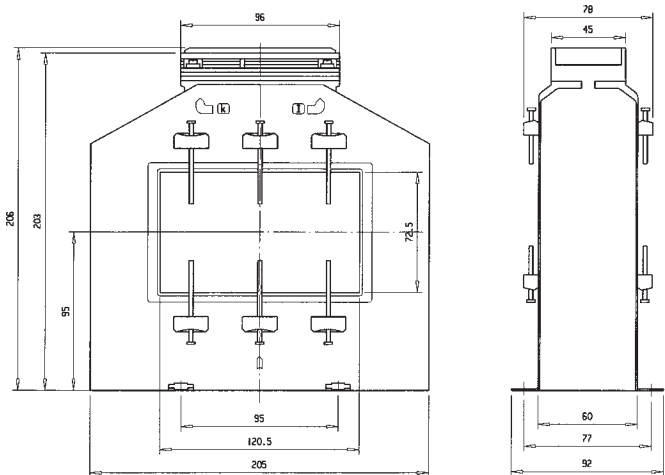
Nominal frequency 50 Hz (also applicable at 60 Hz);
Insulation class E;
Overload factor M 5 (from 2000 A: M 10)

$$I_{th} = 60 I_{1N} \text{ (} I_{1N} \text{ for 1 s duration)};$$

V_{max} 720 V 0.5 series

Secondary nominal current 5 A

Optional secondary nominal current 1 A



ACCESSORIES

Standard foot mounting
with terminal cover

More transformer types on request

Plug-on Current Transformer Type ASK 130.5



**Primary conductor
30 x 30 mm**

This current transformer corresponds to
VDE 0414/1-3, DIN 42600 and IEC 185.

Unbreakable plastic housing, Macrolon black,
self-extinguishing, low flammable.
Transformer housing ultrasonically welded.

Nominal frequency 50 Hz (also applicable at 60 Hz);
Insulation class E;
Overload factor M 5 (from 2000 A: M 10)

$I_{th} = 60 I_{1N}$ (I_{1N} for 1 s duration);

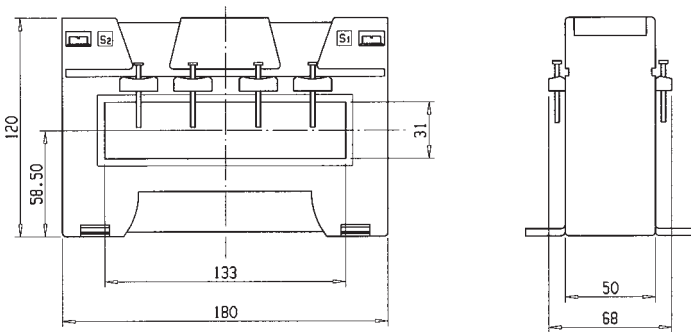
V_{max} 720 V 0.5 series

Secondary nominal current 5 A

Optional secondary nominal current 1 A

primary nominal current A	nominal power for sec. 5 A	
	class 0.5 VA	class 1 VA
300	5	5
	10	10
400	5	5
	10	10
500	5	5
	10	10
	15	15
600	5	5
	10	10
	15	15
750	10	10
	15	15
1000	10	10
	15	15
	30	30
1200	10	10
	15	15
	30	30
1250	10	10
	15	15
	30	30
1500	10	10
	15	15
	30	30
		45
1600	10	10
	15	15
	30	30
2000	10	10
	15	15
	30	30
2400	10	10
	15	15
	30	30
2500	10	10
	15	15
	30	30
3000	10	10
	15	15
	30	30
3200	10	10
	15	15
	30	30

ACCESSORIES



Standard foot mounting
with terminal cover

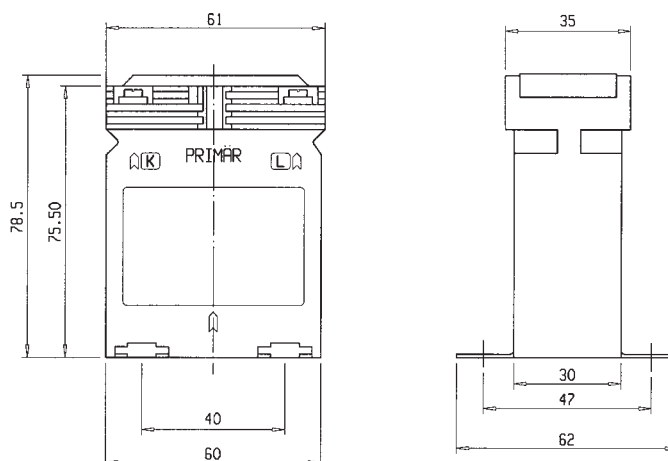
More transformer types on request

Wound-Primary Current Transformer Type WSK 30

primary nominal current A	nominal power for sec. 5 A	
	class 0.5	class 1
	VA	VA
1	2.5	2.5
		5
2,5	2.5	2.5
		5
5	2.5	2.5
		5
10	2.5	2.5
		5
15	2.5	2.5
		5
20	2.5	25
		5



Secondary nominal current 5 A
Optional secondary nominal current 1 A



Standard foot mounting
with terminal cover

Snap-on mounting for
35 mm DIN rail available

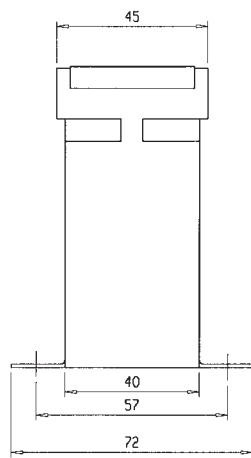
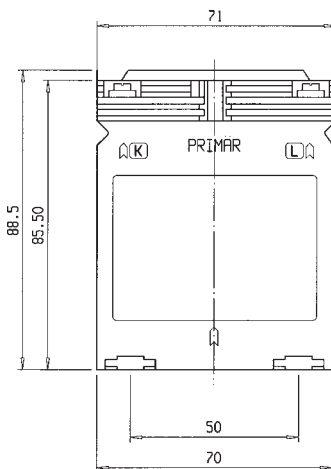
More transformer types on request

ACCESSORIES

Wound-Primary Current Transformer Type WSK 40



Secondary nominal current 5 A
Optional secondary nominal current 1 A



primary nominal current A	nominal power for sec. 5 A	
	class 0.5 VA	class 1 VA
1	2.5	2.5
	5	5
	10	10
2,5	2.5	2.5
	5	5
	10	10
5	2.5	2.5
	5	5
	10	10
10	2.5	2.5
	5	5
	10	10
15	2.5	2.5
	5	5
	10	10
20	2.5	2.5
	5	5
	10	10
25	2.5	2.5
	5	5
	10	10
30	2.5	2.5
	5	5
	10	10

Standard foot mounting
with terminal cover

Snap-on mounting for
35 mm DIN rail available

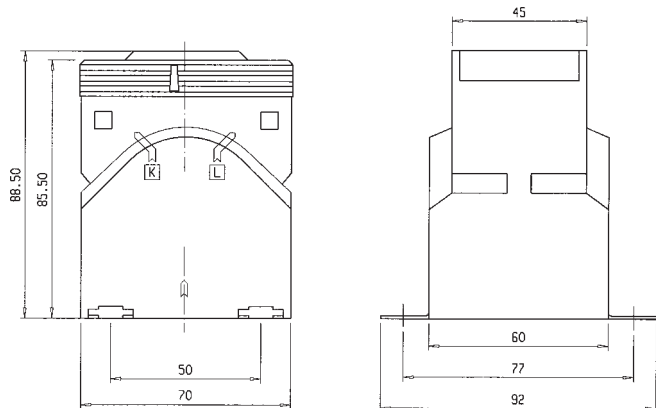
More transformer types on request

Wound-Primary Current Transformer Type WSK 60

primary nominal current A	nominal power for sec. 5 A	
	class 0.5	class 1
	VA	VA
5	2.5	2.5
	5	5
	10	10
		15
10	2.5	2.5
	5	5
	10	10
		15
15	2.5	2.5
	5	5
	10	10
		15
20	2.5	2.5
	5	5
	10	10
		15
25	2.5	2.5
	5	5
	10	10
		15
30	2.5	2.5
	5	5
	10	10
		15



Secondary nominal current 5 A
Optional secondary nominal current 1 A



Standard foot mounting
with terminal cover

ACCESSORIES

More transformer types on request



Split Core Current Transformer Type KBU

Subsequent installation e.g. onto a bus bar
is possible by means of a user-friendly clip fastener.

This current transducer corresponds to VDE 0414/1
DIN 42600 and EN 60044/1.

Nominal frequency 50 Hz
(also applicable at 60 Hz);
Insulation class E
Overload factor M5 (from 2000A: M 10)

$$I_{th} = 60 I_{1N} (I_{1N} \text{ for } 1 \text{ s duration});$$

V_{max} 720 V 0.5 series

Secondary nominal current 5 A

Optional secondary nominal current 1 A

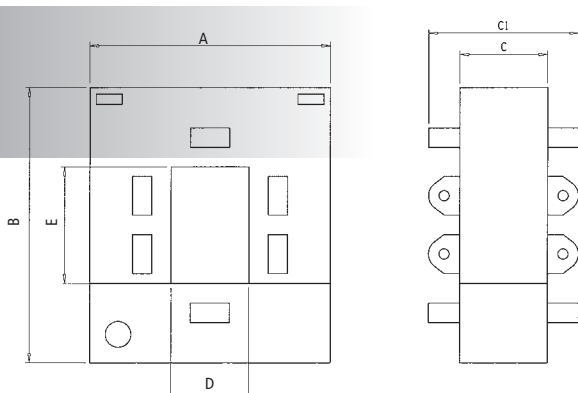
Safety instruction:
The contact surfaces of the split cores
Have to be free of grime!
The transformer must only be
operated in shut state!

Standard foot mounting
terminal cover

primary (A)	KBU 23		KBU 58		KBU 812		KBU 816	
class	1	3	0.5	1	0.5	1	0.5	1
100		1.25						
150		1.5						
200		2.5						
250	1.5			1.5		1.5		
300	3.75			2.5		2.5		
400	5		1	2.5		2.5		
500			2.5	5	2.5	5		
600			2.5	5	2.5	5		
750			2.5	5	2.5	5		
800			2.5	7.5	2.5	7.5		
1000			5	10	5	10	10	10
1200					5	10	10	15
1250					7.5	15		
1500					7.5	15	15	15
1600							15	15
2000							15	15
2500							15	15
3000							15	30
4000							15	30
5000							15	30

All entries in VA

Dimensions (in mm)



Type	A	B	C/C1	D	E	weight
KBU 23	93	106	34/58	20	30	850 g
KBU 58	125	152	34/58	50	80	1080 g
KBU 812	155	198	34/58	80	120	1320 g
KBU 816	195	243	64/79	80	160	3780 g