

Switch Position Indicator with LED



Switch position indicators

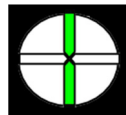
for electrical remote indication of switch positions in power plants, switching stations, control rooms and many other industries. They can also be beneficially used as target indicators in mimic diagrams.



The display can show these three states:

Voltage:

24V AC/DC
48V AC/DC
60V AC/DC
110V AC/DC
230V AC/DC



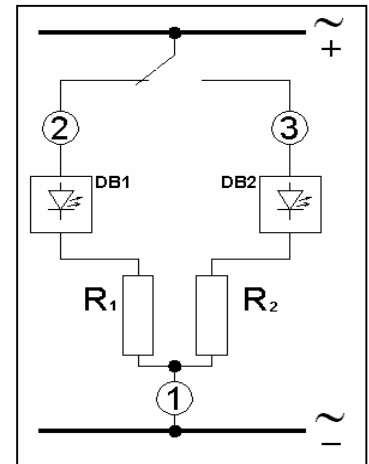
on



off



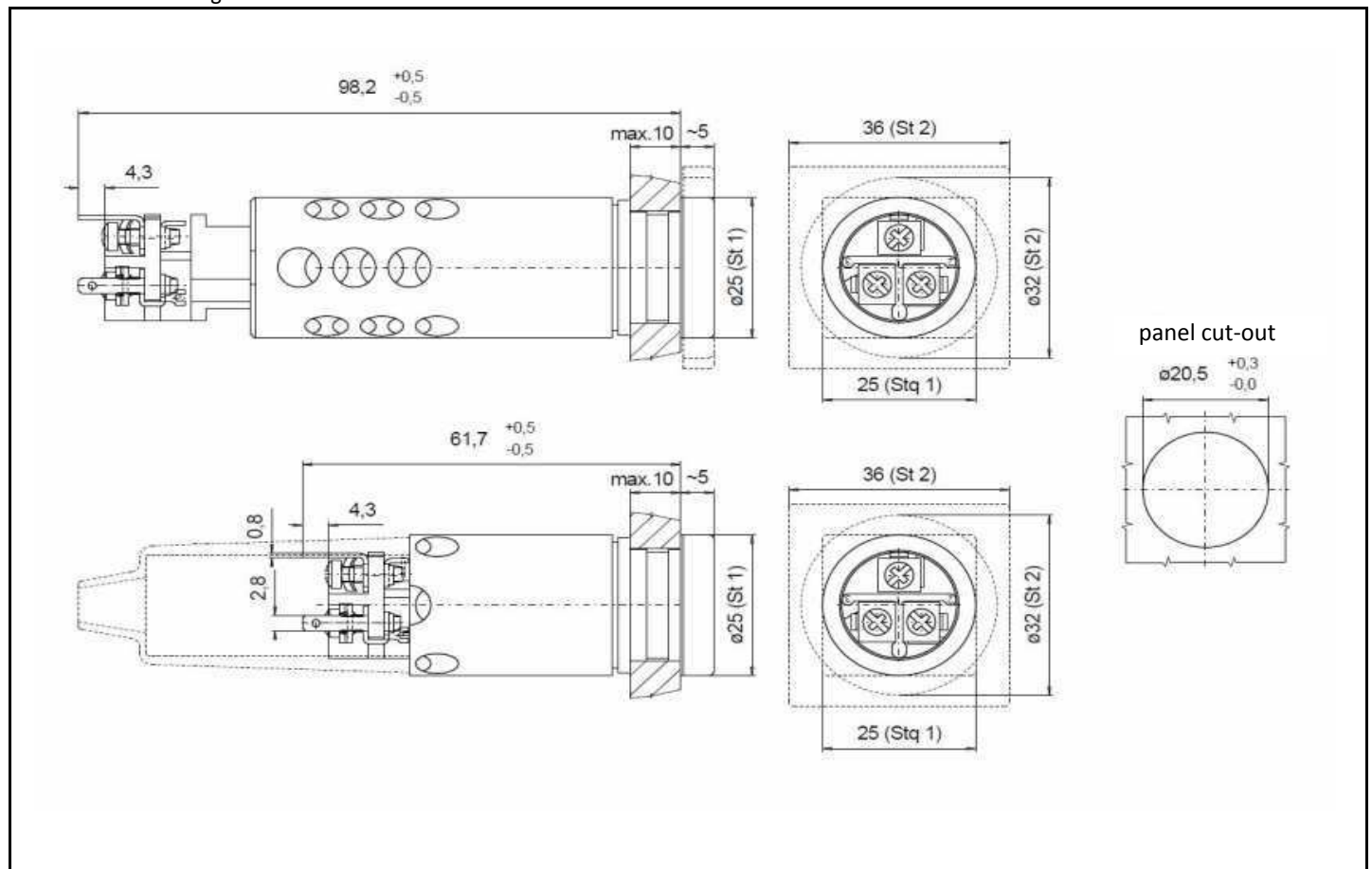
error /
disabled



Parallel load possible

Typ	St 1		Stq 1		St 2	
Technical details						
front dimension (mm):	Ø 25		25 x 25		Ø 32	
housing (mm)	Ø 20		Ø 20		Ø 20	
minimum mounting depth (mm):	62.0	97.5	62.0	97.5	62.0	97.5
weight (kg)	0.04		0.04		0.04	

Dimensioned drawing:



Colour combinations:

	colour 1	colour 2	name of the combination	graphical representation			terminal designation (back view)
				colour 1	colour 2	disabled	
position: terminal no.:	red horizontal 2	green vertical 3	RG				1 - earthing 2 - red 3 - green
position: terminal no.:	red horizontal 2	blue vertical 3	RB				1 - earthing 2 - red 3 - blue
position: terminal no.:	red horizontal 2	orange vertical 3	RO				1 - earthing 2 - red 3 - orange
position: terminal no.:	red horizontal 2	yellow vertical 3	RY				1 - earthing 2 - red 3 - yellow
position: terminal no.:	orange horizontal 2	green vertical 3	OG				1 - earthing 2 - orange 3 - green
position: terminal no.:	orange horizontal 2	blue vertical 3	OB				1 - earthing 2 - orange 3 - blue
position: terminal no.:	orange horizontal 2	yellow vertical 3	OY				1 - earthing 2 - orange 3 - yellow
position: terminal no.:	yellow horizontal 2	green vertical 3	YG				1 - earthing 2 - yellow 3 - green
position: terminal no.:	yellow horizontal 2	blue vertical 3	YB				1 - earthing 2 - yellow 3 - blue
position: terminal no.:	blue horizontal 2	green vertical 3	BG				1 - earthing 2 - blue 3 - green

Ordering details:

variants :	voltage:	colour combinations:	touch protection:	mounting depth:
STQ1 ST1 ST2	24V AC/DC 48V AC/DC 60V AC/DC 110V AC/DC 230V AC/DC	RG RB RO RY OG OB OY YG YB BG	yes no	➤ 62 mm ➤ 98 mm