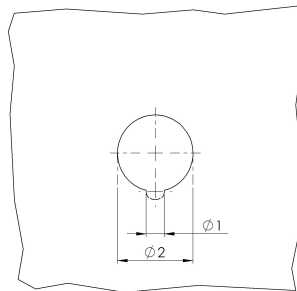


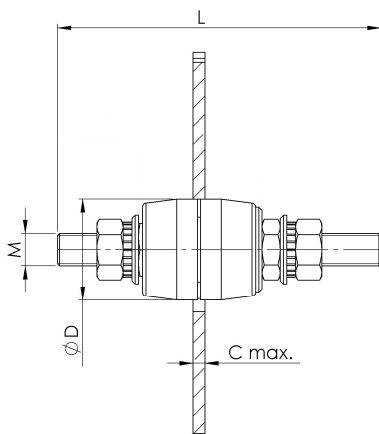
Durchgangs-Isolatoren

Typ PI/P

Polyestermaterial, rot



Verkleidungsbohrung



Typ	Ø 1 [mm]	Ø 2 [mm]	C _{max} [mm]
PI/P 4	2,0	8,5	2,0
PI/P 6	3,0	12,0	3,0
PI/P 8	3,0	15,0	4,0
PI/P 10	4,0	17,0	4,0
PI/P 12	4,5	20,0	4,0
PI/P 16	5,0	25,0	8,0
PI/P 20	5,5	31,0	10,0

Typ	L [mm]	Ø D [mm]	U _M [V]	M	VPE [Stk.]
PI/P 4	50	15	600	M4	60
PI/P 6	65	22	1000	M6	40
PI/P 8	80	25	1000	M8	25
PI/P 10	95	30	1000	M10	20
PI/P 12	105	35	1000	M12	15
PI/P 16	135	43	2000	M16	8
PI/P 20	155	54	2000	M20	4