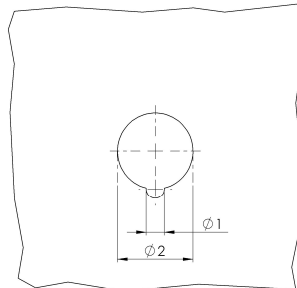


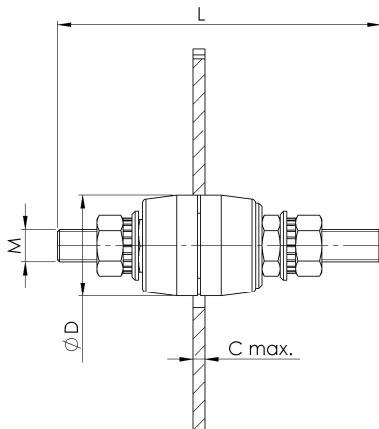
# Passing insulator

## Type PI/P

Polyester material, red



Panel bore



Type	Ø 1 [mm]	Ø 2 [mm]	C <sub>max</sub> [mm]
PI/P 4	2.0	8.5	2.0
PI/P 6	3.0	12.0	3.0
PI/P 8	3.0	15.0	4.0
PI/P 10	4.0	17.0	4.0
PI/P 12	4.5	20.0	4.0
PI/P 16	5.0	25.0	8.0
PI/P 20	5.5	31.0	10.0

Type	L [mm]	Ø D [mm]	U <sub>M</sub> [V]	M	PU [pcs.]
PI/P 4	50	15	600	M4	60
PI/P 6	65	22	1000	M6	40
PI/P 8	80	25	1000	M8	25
PI/P 10	95	30	1000	M10	20
PI/P 12	105	35	1000	M12	15
PI/P 16	135	43	2000	M16	8
PI/P 20	155	54	2000	M20	4