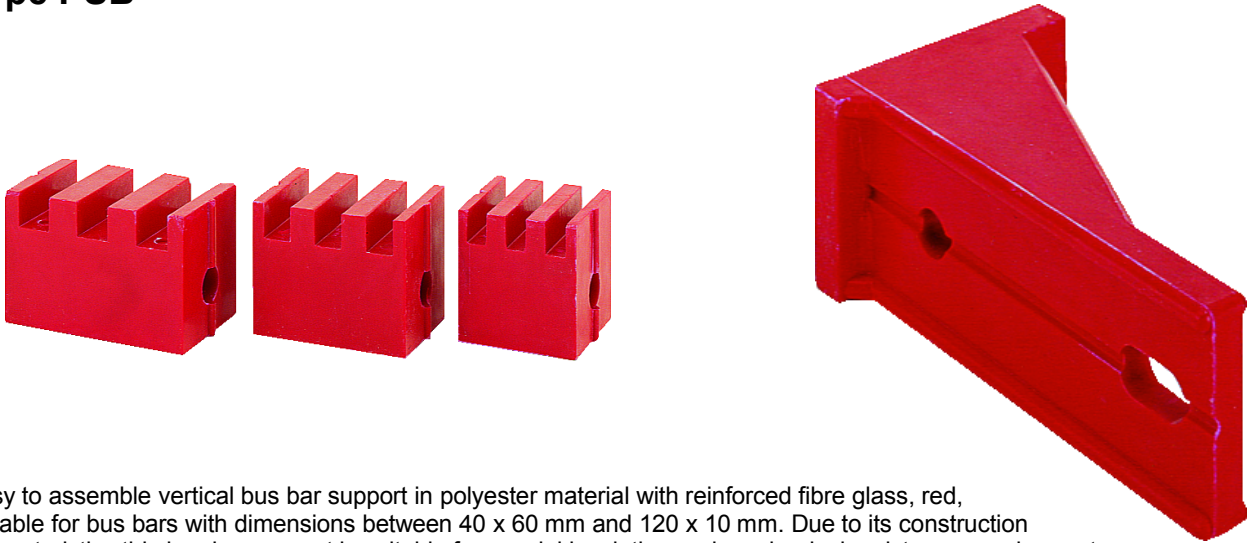
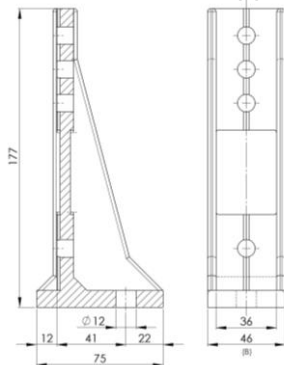
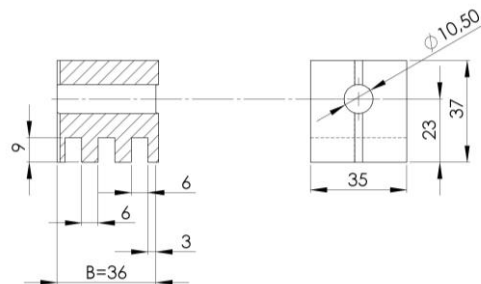
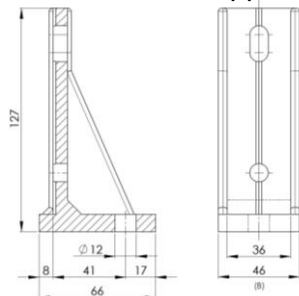
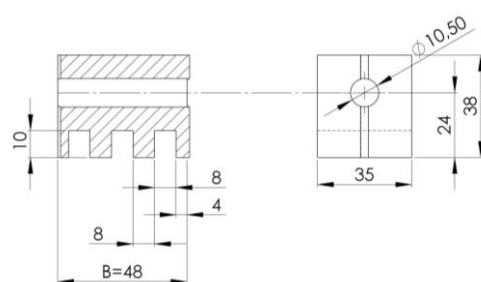
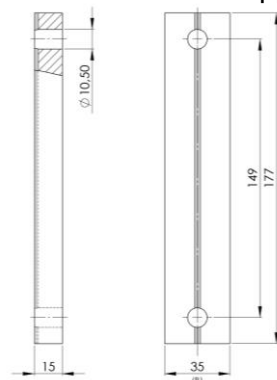
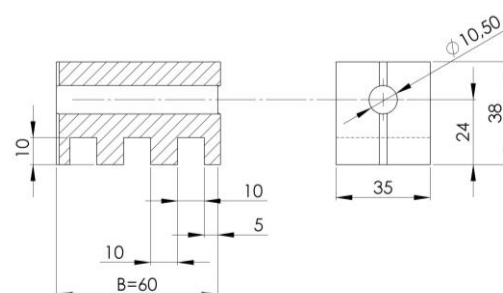


## Vertical bus bar support Type PSB



Easy to assemble vertical bus bar support in polyester material with reinforced fibre glass, red, suitable for bus bars with dimensions between 40 x 60 mm and 120 x 10 mm. Due to its construction characteristics this bus bar support is suitable for special insulating and mechanical resistance requirements. For the mounting of a bus bar support the following parts are required:  
1 or 2 lateral supports, two mounting screws and the necessary block number to clamp into place the required bus bars.

**PSB/1** – Horizontal / lateral support**PSB/6** - Block for 6 mm bus bar**PSB/2** - Horizontal / lateral support**PSB/8** - Block for 8 mm bus bar**PSB/120** - Horizontal / lateral support**PSB/10** - Block for 10 mm bus bar

Lateral support	Blocks	Bus bars		
PSB/1	PSB 6	60 x 6	80 x 6	100 x 6
	PSB 8	60 x 8	80 x 8	100 x 8
	PSB 10	60 x 10	80 x 10	100 x 10
PSB/2	PSB 6	40 x 6	50 x 6	
	PSB 8	40 x 8	50 x 8	
	PSB 10	40 x 10	50 x 10	
PSB/120	PSB 6	120 x 6		
	PSB 8	120 x 8		
	PSB 10	120 x 10		

Elastic deviation of the teeth with signs of rupture			Pack. [pcs.]
PSB/6	kg	950	36
PSB/8	kg	1130	30
PSB/10	kg	1375	24

Operating voltage      **1000 V**  
 Operating temperature      **-40 °C ≤ q ≤ +130 °C**  
 Fire resistance      **class: UL94-V0**

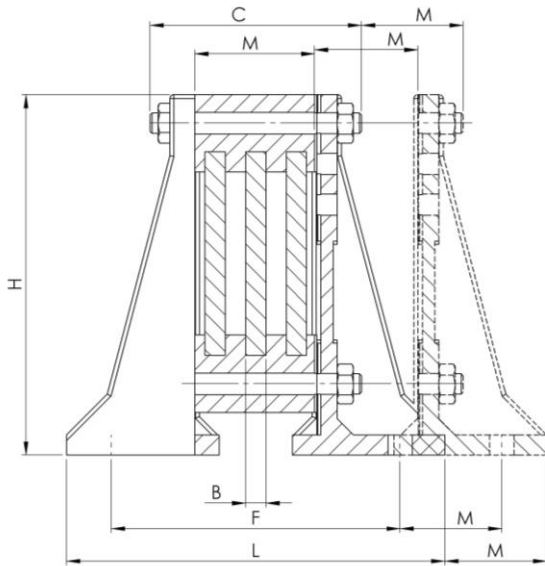
**Resistance of short-circuiting of the bus bar support type PSB**

Type	Mounting acc. illustration	Bus bar per phase	Distance between phases [mm]	Supporting width [mm]	Rated surge current I <sub>pk</sub> [kA]	Rated short-time current [kA / 1 sec.]
PSB/1	1B	3 x 100 mm x 10 mm	185	400	143	65
PSB/1	1B	3 x 100 mm x 10 mm	185	300	154	70
PSB/1	5	3 x 100 mm x 10 mm	120	300	220	100
PSB/1 plus PSB/120	1B	3 x 120 mm x 10 mm	185	300	176	80
PSB/1 plus PSB/120	5	3 x 120 mm x 10 mm	185	300	264	120

## Vertical bus bar support Type PSB

Illustration 1

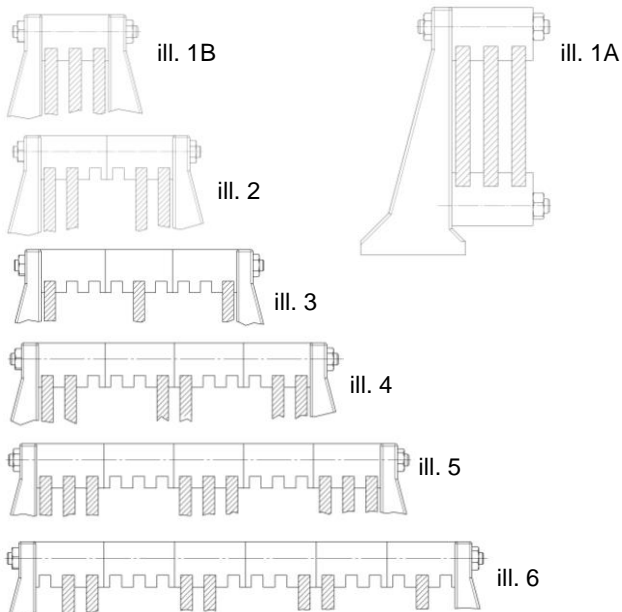
Example of an unipolar bus bar support with 3 parallel bus bar support holders



A = Number of blocks  
B = Bus bar thickness  
C = Length of mounting screw

L = External space requirement  
H = Height  
M = Module

Illustrations 1 – 2 – 3 – 4 – 5 – 6  
show some of the possible variations.  
Illustrations up to max. 10 x 100 mm



H. With lateral support PSB/1 = 177 mm  
PSB/2 = 127 mm

M. With block PSB/6 = 36 mm  
PSB/8 = 48 mm  
PSB/10 = 60 mm

Pack. [pcs.]	Article group	H [mm]	B [mm]	U <sub>M</sub> [V]	For thread
96	PSB/1	177	46	1000	M10
144	PSB/2	127	46	1000	M10
244	PSB/120	177	35	1000	M10
36	PSB/6	37	36	1000	M10
30	PSB/8	38	48	1000	M10
24	PSB/10	38	60	1000	M10

Article group	ill.	H [mm]	L [mm]	U <sub>M</sub> [V]	For thread	B [mm]
PSB	1A	177		1000	M10	6
PSB	1A	177		1000	M10	8
PSB	1A	177		1000	M10	10
PSB	1B	177	162	1000	M10	6
PSB	1B	177	174	1000	M10	8
PSB	1B	177	186	1000	M10	10
PSB	2	177	198	1000	M10	6
PSB	2	177	222	1000	M10	8
PSB	2	177	246	1000	M10	10
PSB	3	177	234	1000	M10	6
PSB	3	177	270	1000	M10	8
PSB	3	177	306	1000	M10	10
PSB	4	177	270	1000	M10	6
PSB	4	177	318	1000	M10	8
PSB	4	177	366	1000	M10	10
PSB	5	177	306	1000	M10	6
PSB	5	177	366	1000	M10	8
PSB	5	177	426	1000	M10	10
PSB	5	177	342	1000	M10	6
PSB	5	177	414	1000	M10	8
PSB	5	177	486	1000	M10	10
PSB	1A	127		1000	M10	6
PSB	1A	127		1000	M10	8
PSB	1A	127		1000	M10	10
PSB	1B	127	152	1000	M10	6
PSB	1B	127	164	1000	M10	8
PSB	1B	127	176	1000	M10	10
PSB	2	127	188	1000	M10	6
PSB	2	127	212	1000	M10	8
PSB	2	127	236	1000	M10	10
PSB	3	127	224	1000	M10	6
PSB	3	127	260	1000	M10	8
PSB	3	127	296	1000	M10	10
PSB	4	127	260	1000	M10	6
PSB	4	127	308	1000	M10	8
PSB	4	127	356	1000	M10	10
PSB	5	127	296	1000	M10	6
PSB	5	127	356	1000	M10	8
PSB	5	127	416	1000	M10	10
PSB	6	127	332	1000	M10	6
PSB	6	127	404	1000	M10	8
PSB	6	127	476	1000	M10	10

The above mentioned data are only for information purposes and are without a guarantee. The customer is required to check from time to time if the product is suitable for the required application.

Upon request milled bus bar supports and other from GPO-3 extracted details can be supplied.

In this instance drawings are to be submitted.

Type-tested according to IEC 61439-2:2011-08, EN 61439-2:2012-06 with practically relevant fixing points and supporting widths.