

Spacing insulator

Type DB/P



Made of Polyglas-polyester material, reinforced with fiberglass, colour red, self-extinguishing.

The insulators of type DB are unbreakable and have excellent electrical and mechanical characteristics. They can be used under extreme working conditions such as high room temperatures, also when in contact with corrosive substances, vibrations, etc.

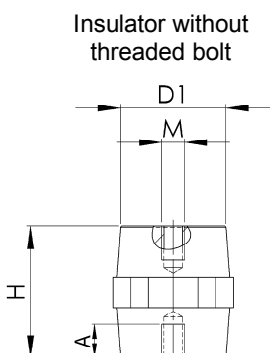
The hexagon, arranged middle layer with two facing sides, facilitates the connection and locking in place the insulator.

Upon request, the insulators can be supplied as follows:

- The insulator can be equipped with a thread which is not standard
- The insulator can be supplied with one or two threaded bolts "GB"

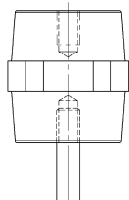
Operating temperature: -40 °C up to +130 °C

Fire resistance class: UL94-V0

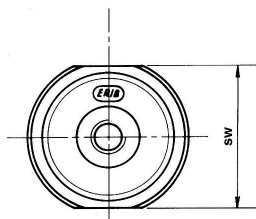
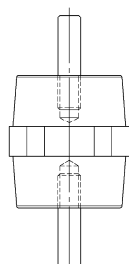


Insulator without threaded bolt

Insulator with one threaded bolt



Insulator with two threaded bolts



Type	H [mm]	sw* [mm]	D1 [mm]	U _M [V]	M	A [mm]	Colour	PU [pcs.]
DB/P 12	12	11	10	220	M3	3	black	100
DB/P 12	12	11	10	220	M4	3	red	100
DB/P 16	16	14	13	380	M4	4	red	100
DB/P 20	20	17	15	500	M4	6	red	100
DB/P 20	20	17	15	500	M6	6	red	100
DB/P 25	25	19	15	600	M6	7	black	250
DB/P 25	25	19	15	600	M5	7	red	250
DB/P 25	25	19	15	600	M6	7	red	250
DB/P 30	30	30	26	600	M6	8	red	80
DB/P 30	30	30	26	600	M8	7	red	80
DB/P 34	35	32	28	1000	M6	9	red	64
DB/P 34	35	32	28	1000	M8	10	red	64
DB/P 34	35	32	28	1000	M10	10	red	64
DB/P 35	35	41	35	1000	M6	9	red	36
DB/P 35	35	41	35	1000	M8	9	red	36
DB/P 35	35	41	35	1000	M10	10	red	36
DB/P 40	40	40	30	1000	M8	11	red	100
DB/P 40	40	40	30	1000	M10	12	red	100
DB/P 40	40	40	30	1000	M12	10	red	100
DB/P 45	45	41	35	1500	M6	12	red	27
DB/P 45	45	41	35	1500	M8	12	red	27
DB/P 45	45	41	35	1500	M10	12	red	27
DB/P 45	45	41	35	1500	M12	12	red	27
DB/P 50	50	36	29	2000	M8	12	red	36
DB/P 50	50	36	29	2000	M10	12	red	36
DB/P 50	50	36	29	2000	M12	13	red	36
DB/P 60	60	55	40	2000	M8	20	red	25
DB/P 60	60	55	40	2000	M10	21	red	25
DB/P 60	60	55	40	2000	M12	20	red	25
DB/P 65	63.5	41	35	3000	M8	17	red	22
DB/P 65	63.5	41	35	3000	M10	19	red	22
DB/P 65	63.5	41	35	3000	M12	19	red	22
DB/P 75	76	50	36	5000	M8	19	red	12
DB/P 75	76	50	36	5000	M10	19	red	12
DB/P 75	76	50	36	5000	M12	19	red	12
DB/P 750	75	65	52	5000	M12	18	red	8
DB/P 750	75	65	52	5000	M16	23	red	8

* sw = wrench width

Type	Thread	Ripple current resistance [kV]	Discharge voltage [kV]	Max. tensile load [kN]	Max. bending load [kN]	Max. compression load [kN]	Max. starting torque [Nm]
DB/P 16	M4	3	8	1	0.5	5	2.8
DB/P 20	M4	4	15	1.5	0.6	6	2.8
DB/P 20	M6	4	15	1.5	0.6	6	8.9
DB/P 25	M5	7	20	3	1.8	21	5.1
DB/P 25	M6	7	20	3	1.8	21	8.9
DB/P 30	M6	8	23	5	2.5	44	8.9
DB/P 30	M8	8	23	5	2.5	44	21.5
DB/P 34	M6	10	30	8	4.5	65	8.9
DB/P 34	M8	10	30	8	4.5	65	21.5
DB/P 34	M10	10	30	8	4.5	65	43.0
DB/P 35	M6	10	30	11	8	80	8.9
DB/P 35	M8	10	30	11	8	80	21.5
DB/P 45	M6	12	40	12	8	80	8.9
DB/P 45	M8	12	40	12	8	80	21.5
DB/P 45	M10	12	40	12	8	80	43.0
DB/P 45	M12	12	40	12	8	80	85.0
DB/P 50	M8	12	40	8.5	4.5	68	21.5
DB/P 50	M10	12	40	8.5	4.5	68	43.0
DB/P 50	M12	12	40	8.5	4.5	68	85.0
DB/P 65	M8	15	40	15	7	83	21.5
DB/P 65	M10	15	40	15	7	83	43.0
DB/P 65	M12	15	40	15	7	83	85.0
DB/P 75	M8	25	50	23	9	100	21.5
DB/P 75	M10	25	50	23	9	100	43.0
DB/P 75	M12	25	50	23	9	100	85.0
DB/P 750	M12	25	50	28	15	150	85.0
DB/P 750	M16	25	50	28	15	150	180.4

The spacing insulator type DB/P has been tested for insulating material (discharge voltage, discharge strength and arcing) according to the regulations covering VDE 0303-21 03/1999 / DIN EN 60243-1 03/1999.

Appraisal of the discharge voltage or arcing between two unequal electrodes (diameter 25 mm or 75 mm).

The test was made for the norm climate 23/50, ambient temperature (23 ±2) °C and (50 ±5) % relative humidity.